



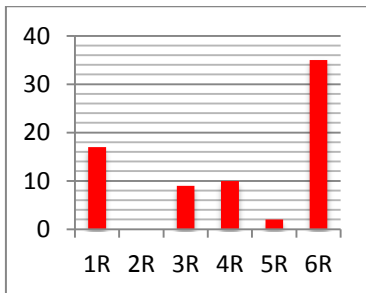
Newsletter

Issue 30

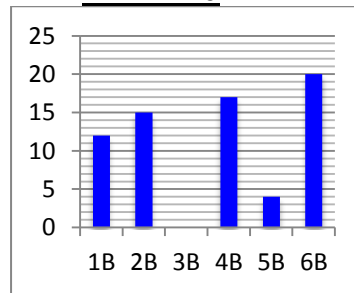
Friday 13th May 2016

BEST ATTENDANCE

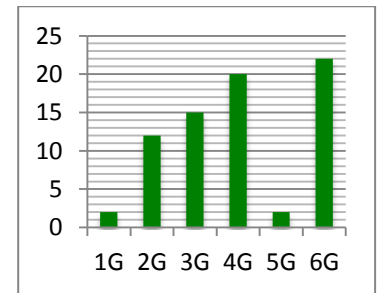
YEAR 1-6



6R = 10, 4R/1R = 5, 3R = 2

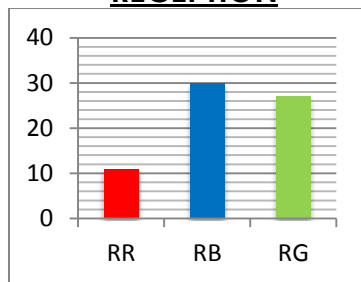


6B = 10, 1B = 5, 4B = 2



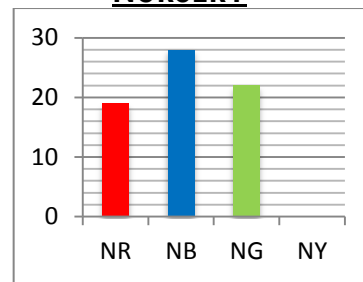
4G = 10, 2G/3G = 5, 1G = 2

RECEPTION



RB = 10, RR = 5, RG = 2

NURSERY



NG = 10, NB = 5, NR = 2



EARLY BIRDS



Nursery Blue, Reception Red, Year 1 Red, Year 2 Blue, Year 3 Red & Green, Year 4 Green & Blue, Year 5 Red, Year 6 Green.



STAR PUPILS

Reception – Ali, Hibo.



Year 2 – Ayub, Isalshaq, Malachi, Yaseen, Yusuf, Layla, Jameel.

VALUE AWARDS



Mahdiya – 2 Green



AFTER SCHOOL CLUB SNACKS

Your child may be given a healthy snack and drink to have before the club starts.

Over the past few weeks we have noticed a number of snacks have not been healthy. Pupils should only be given 1 or 2 pieces of fruit and water. Please could you ensure you give these snacks on the morning your child/ren have a club.

Nursery Closure

Thursday 30th June 2016

This is for the London Aquarium visit on 30th June, We apologise for any disruption this may cause and hope this early notice will enable you to make arrangements.

SWIMMING IN TOWER HAMLETS

Free Swim Fridays during public sessions

Free Family Swim Saturdays from 12:00pm till close

For these free swims you will need a Pay & Play Card

Juniors £2.70 per year

Adults £5.65

Concessions £1.45 (bring proof of your concession)

AFTER SCHOOL CHILDCARE

We are pleased to let you know that we will be starting after school extended childcare from September 5th next year. There will be a registration date in early July and more information about the service will be provided then.

SCHOOL COUNCIL MEETING DATES

These are the dates for the school council meetings until the end of summer term.

Thursday 19th May 2016

Thursday 9th June 2016

Thursday 23rd June 2016

Thursday 7th July 2016

Thursday 21st 2016

SRE INFORMATION EVENT

We will be holding a SRE information event on Tuesday 17th May 2016. We hope that you are able to join us.

OLD FORD PRIMARY ACADEMY TERM DATES 2015/16

| Term | Start | End | Half- term holidays | Start | End | End of term holiday |
|--------------------|------------------------------------|----------------------------------|--|----------------------------------|-----------------------------------|----------------------------|
| Summer 2016 | Monday 11 th April 2016 | Friday 27 th May 2016 | 30 th May – 3 rd June 2016 | Monday 6 th June 2016 | Friday 22 nd July 2016 | 23 rd July 2016 |
| | INSET DAY | | | | | |

HOLIDAY DATES

The last day of summer term 1 is **Friday 27th May 2016**
Half Term Holiday is **Monday 30th May – Friday 3rd June 2016**

All pupils are to return to school on Monday 6th June at 8.55am

SCHOOL UNIFORM

Please could all parents/carers ensure that they label their child's clothing. Unless it is named, it is very difficult to find the owner and the item ends up lost!

COLLECTING PUPILS AT THE END OF THE DAY

If you want your child/ren to be collected by an adult who does not normally collect them, you must inform the school first. If the school has not been informed, your child will not be allowed to leave the premises with that adult.