

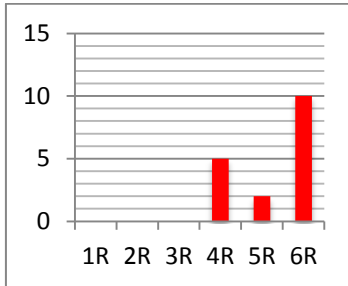


# Newsletter

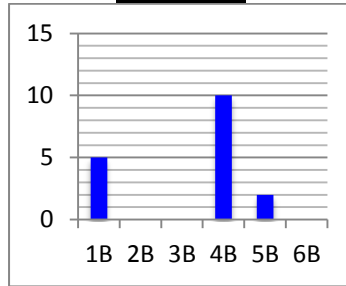
Issue 28

Friday 29<sup>th</sup> April 2016

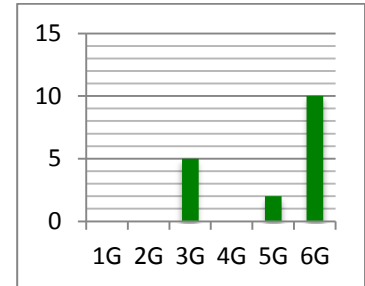
## Year 1-6



6R = 10, 4R = 5, 5R = 2

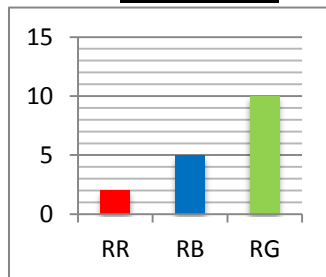


4B = 10, 1B = 5, 5B = 2



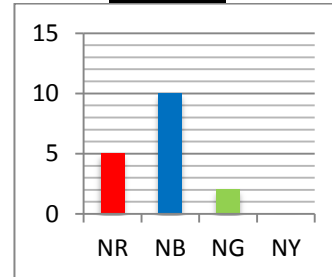
6G = 10, 3G = 5, 5G = 2

## Reception



RG = 10, RB = 5, RR = 2

## Nursery



NB = 10, R = 5, NG = 2



## EARLY BIRDS



Nursery Yellow, Reception Green, Year 1 Red & Blue, Year 2 Green, Year 3 Red, Year 4 Blue & Red, Year 5 Green, Year 6 Green.

## MAKE YOUR MARK ON VICKY PARK

Saturday, 23 April at 11am – 1pm

Join our Community Park Rangers to help carry out some practical conservation in the park. Meet at the Outdoor Classroom, near St Agnes Gate.



## STAR PUPILS



Reception – Chloe, Isabella, Zara.

Year 1 – Abdulfatah, Imdad, Sara, Malakai.

Year 2 – Kaisaan, Yusra, Eesa, Sharmin, Charlie, Yaseen, Layla Irfan.

## NURSERY PARENT/CARERS

If your child needs to pay for school meals you must ensure that your child's account is clear of any debt. Please also ensure payments for the week ahead are made every Monday.

## VALUE AWARDS



Samia – RB  
Timur – RG

Tahirma – 1G  
Takiya – 1G



Shuba – RB  
Aleksander – 2G

## BANK HOLIDAY MONDAY

School will be closed to all pupils on Monday 2<sup>nd</sup> May 2016 due to the public Bank Holiday.

All pupils are to return to school on Tuesday 3<sup>rd</sup> May at 8.55am.

## OLD FORD PRIMARY ACADEMY TERM DATES 2015/16

Term	Start	End	Half- term holidays	Start	End	End of term holiday
<b>Summer 2016</b>	Monday 11 <sup>th</sup> April 2016  <b>INSET DAY</b>	Friday 27 <sup>th</sup> May 2016	30 <sup>th</sup> May – 3 <sup>rd</sup> June 2016	Monday 6 <sup>th</sup> June 2016	Friday 22 <sup>nd</sup> July 2016	23 <sup>rd</sup> July 2016

### HOLIDAY DATES

The last day of summer term 1 is **Friday 27<sup>th</sup> May 2016**  
Half Term Holiday is **Monday 30<sup>th</sup> May – Friday 3<sup>rd</sup> June 2016**  
**Bank Holiday – Monday 2<sup>nd</sup> May 2016**

**All pupils are to return to school on Monday 6<sup>th</sup> June at 8.55am**

### EXTENDED LEAVE REMINDER

#### Extended leave during term time is unauthorised.

If you choose to take the leave despite this decision, please be advised of the following:

- Your child/ren's absence will be recorded as unauthorised
- Your child/ren may lose their school place if they exceed more than 20 days of absence
- If you exceed 3 days then you will be referred to Tower Hamlets Attendance & Welfare Service and will face the possibility of being fined £120 per child, per parent.

### OLD FORD SCHOOL UNIFORM

#### Every day school uniform

White shirt or polo top, Black/ Grey trousers, Blue/ Black jumper/ cardigan. (NO hooded tops, stripes or logos)

Blue jumpers with the school uniform can be purchased from Khalsa (based on Bethnal Green Road)

Grey dresses (winter)

Checked white and blue dress (summer only)

Black shoes

#### PE Uniform

Black/ Navy t-shirt, Black/ Navy tracksuit bottoms, Trainers

### PARKING

The school has received a number of complaints from local residents about parents/carers who park outside their houses, blocking access to their driveways. One resident on the Old Ford Housing estate said that a parent had parked in their allocated bay and they were unable to reach their house!

Please:

- **DO NOT stop on the double yellow/zig zag lines outside the school to drop off or collect your pupils**
- **DO NOT drive onto the pavement in front of the staff parking area - this is very dangerous**
- **DO NOT park in residents' parking bays or block access to their driveways**

We are working with Tower Hamlets council parking enforcement to stop these dangerous practices. Our priority is the safety of your children.