

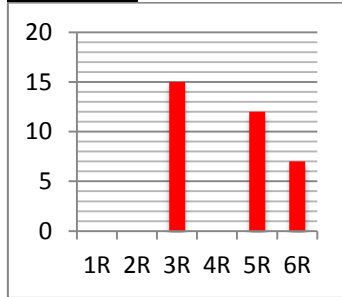


# Newsletter

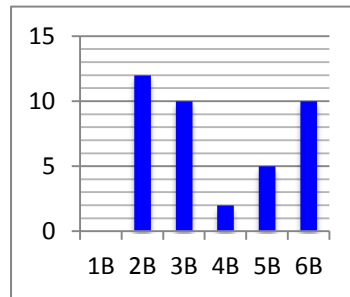
Issue 18

Friday 29th January 2016

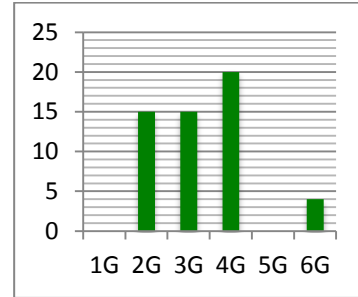
## Year 1-6



3R = 10, 4R = 5, 5R = 2

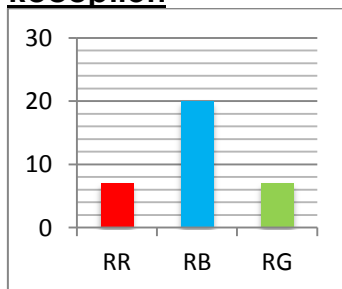


2B = 10, 1B = 5, 5B = 2



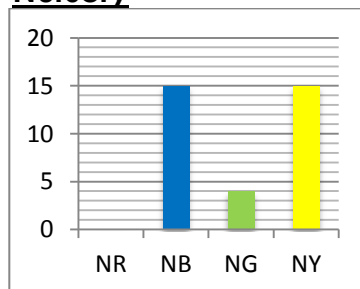
5R = 10, 6R = 5, 4G = 2

## Reception



RB = 10, RG = 5, RR = 2

## Nursery



NR = 10, NG = 5, NB = 2



## Early Birds



Nursery Red & Yellow, Reception Blue & Green, Year 1 Green & Blue, Year 2 Green & Blue, Year 3 Green, Year 4 Red, Year 5 Blue, Year 6 Blue/Green.

## STAR PUPILS



Reception – Samuel, Maya, Ilyas, Malaz, Musa, Sara.

Year 1 – Nishant, Malakai.

Year 2 – Rehan, Hisham, Iba, Malachi, Irfan.

Year 4 – Nasir, Suki, Abdimalik, Zainab.

Year 5 – Yasmin, Tamjid.



## VALUE AWARDS



Mariya – RG, Ria – RR, Nahima – RR, Sama – 1R, Yusra – 2G



Hamza – RG



Jayden – 2G



**FEBRUARY HALF TERM**

The last day for this half term is Friday 12<sup>th</sup>  
February 2016

**Monday 15<sup>th</sup> – Friday 19<sup>th</sup> February 2016**

**All pupils are to return back to school on Monday  
22<sup>nd</sup> February at 8.55am.**

**COFFEE MORNING**

Coffee morning is every Thursday in the extended schools room at 9am. All welcome.



**PE KIT**

During this cold weather, you may like to provide jogging bottoms and a sweatshirt your child/ren to wear during P.E. lessons. Please ensure your child has his/hers PE kit in the morning of the day they have PE. Thank you

**PLAYGROUNDS**

Please note that staff are not on duty in playgrounds before and after school. Parents/carers must ensure that they closely supervise their child/ren before and after they have been collected. Pupils should not be playing in the playground before and after school.

**OLD FORD PRIMARY A PARADIGM ACADEMY  
SCHOOL HOLIDAY PROGRAMME**



We will be running our February half term school holiday programme for pupils in Year 1-6. This will include a number of activities, sports and games, arts and crafts, and computer skills. Activities will take place at Old Ford Primary Academy from 10.00am - 4.00pm daily. Child care is also available before and after the main programme from 8.00am - 10.00am and from 4.00pm - 6.00pm.

**Registration will take place on 4<sup>th</sup> & 5<sup>th</sup> February in the ground floor hall at 9am.**

**OLD FORD PRIMARY ACADEMY TERM DATES 2015/16**

Term	Start	End	Half- term holidays	Start	End	End of term holiday
<b>Spring 2016</b>	Monday 4 <sup>th</sup> January 2016	Friday 12 <sup>th</sup> February 2016	15 <sup>th</sup> – 19 <sup>th</sup> February 2016	Monday 22 <sup>nd</sup> February 2016	Thursday 24 <sup>th</sup> March 2016	25 <sup>th</sup> March – 8 <sup>th</sup> April 2016
<b>Summer 2016</b>	Monday 11 <sup>th</sup> April 2016 <b>INSET DAY</b>	Friday 27 <sup>th</sup> May 2016	30 <sup>th</sup> May – 3 <sup>rd</sup> June 2016	Monday 6 <sup>th</sup> June 2016	Friday 22 <sup>nd</sup> July 2016	23 <sup>rd</sup> July 2016

**STAFF INSET DAY**

There will be a staff inset training day on **Monday 11<sup>th</sup> April 2016** therefore school will be closed to all pupils. Pupils are to return to school on Tuesday 12<sup>th</sup> April at 8.55am.