



Newsletter

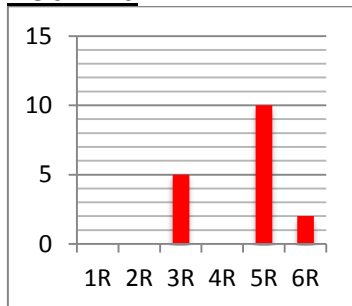
Issue 16

Friday 15th January 2016

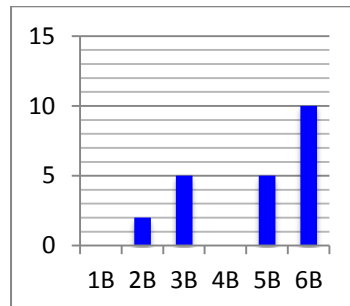
Well done to the winners of the attendance prize for Autumn Term 2

Year 5 Red, Year 6 Blue, Year 5 Green, Reception Blue and Nursery Red

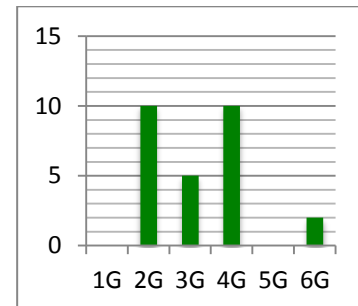
Year 1-6



5R = 10, 3R = 5, 6R = 2

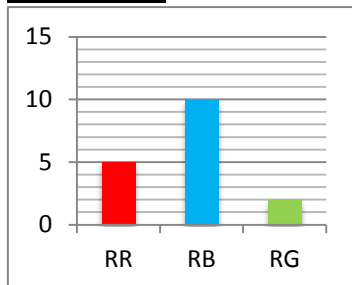


6B = 10, 5B/3B = 5, 2B = 2



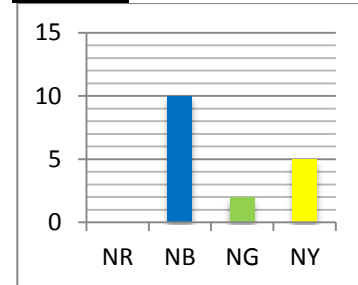
4G/2G = 10, 3G = 5, 6G = 2

Reception



RB = 10, RR = 5, RG = 2

Nursery



NB = 10, NY = 5, NG = 2



Early Birds



Nursery Red & Yellow, Reception Blue & Green, Year 1 Red, Blue & Green, Year 2 Red & Green, Year 3 Blue, Year 4 Red & Green, Year 5 Red, Year 6 Green.

Star Pupils

Reception Red – Nasrin, Alfie.

Year 1 – Sama, Parvez.

Year 2 – Ameen, Shannie, Madiha, Habeeba, Anisa, Malachi, Yusuf.

Year 4 – Jay, Jasurbek, Zainab

Value Award



Zac & Shayla
Reception Red



Uzair & Nishant
Year 1 Red



FEBRUARY HALF TERM

Monday 15th – Friday 19th February 2016

All pupils are to return back to school on Monday 22nd February at 8.55am.

OLD FORD PRIMARY ACADEMY TERM DATES 2015/16

Term	Start	End	Half- term holidays	Start	End	End of term holiday
Spring 2016	Monday 4 th January 2016	Friday 12 th February 2016	15 th – 19 th February 2016	Monday 22 nd February 2016	Thursday 24 th March 2016	25 th March – 8 th April 2016
Summer 2016	Monday 11 th April 2016 INSET DAY	Friday 27 th May 2016	30 th May – 3 rd June 2016	Monday 6 th June 2016	Friday 22 nd July 2016	23 rd July 2016

Spring Half Term - Monday 15th February 2016 – Friday 19th February 2016. All pupils are to return to school on **Monday 22nd February** at 8.55am.

STAFF INSET DAY

There will be a staff inset training day on Monday 11th April 2016 therefore school will be closed to all pupils. Pupils are to return to school on Tuesday 12th April at 8.55am.

AFTER SCHOOL CLUB

We have had a number of questions from parents/carers regarding an extended hours after school child care club. In the next few days we will be sending out a survey to parents/carers and if there is sufficient interest we will look more closely into this.

MORNING PROCEDURES

Parents/carers are reminded that if you arrive at school after 9.00am, you **must** come to the administration office and sign your child/ren in. If you do not sign your child/ren in, there is a risk of your child not being marked in on their register which can be extremely dangerous if there were to be a fire. If you are running late, please inform the school before 10.30am, so that your child/ren can be booked in for lunch. Thank you for your cooperation in this matter.

COFFEE MORNING

Coffee morning is every Thursday in the extended schools room at 9am. All welcome.



PE KIT

During this cold weather, you may like to provide jogging bottoms and/or a sweatshirt for children to wear during P.E. lessons.

PLAYGROUNDS

Please note that staff are not on duty in playgrounds before and after school. Parents/ carers must ensure that they closely supervise their child/ren before and after they have been collected.