

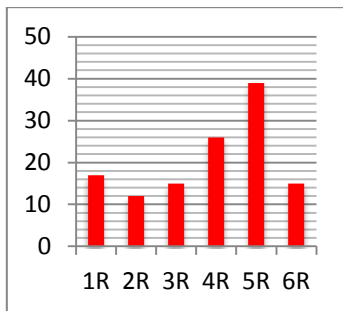


# Newsletter

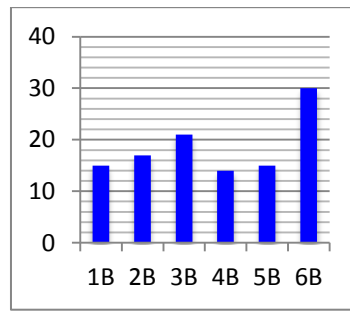
Issue 14

Friday 18<sup>th</sup> December 2015

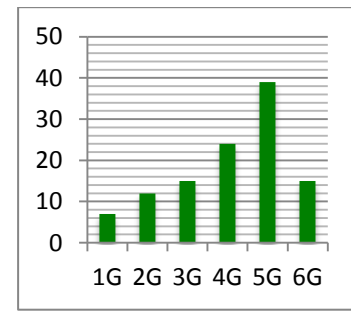
## Year 1-6



1R = 10, 4R = 5, 5R = 2

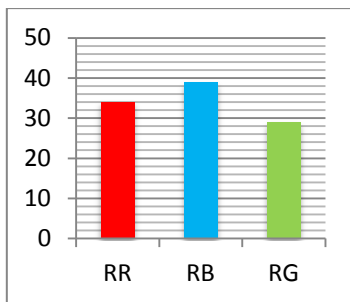


6B = 10, 5B = 5, 3B = 2



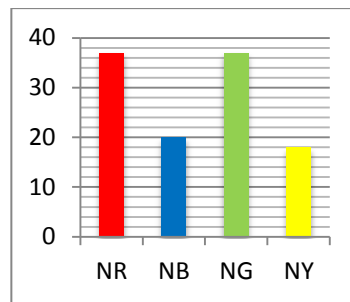
4G/5G = 10, 6G = 5, 2G = 2

## Reception



RG = 10, RR = 5, RB = 2

## Nursery



NR = 10, NB = 5, NY = 2

## EARLY BIRDS

Nursery Yellow, Reception Blue, Year 1 Blue & Red, Year 2 Green, Year 3 Green, Year 4 Green, Year 5 Red, Year 6 Blue.

## STAR PUPILS



**Reception** – Ismail, Joel, Ariel, Fatema, Rayan.

**Year 1** – Riyad, Ibrahim, Sama.

**Year 2** – Sajidah, Tayyiba, Tahseen, Malachi, Charlie, Yusuf.

**Year 5** – Nujhat, Connor.



## VALUE AWARD



Sameera – 1B



Marley – RG

Ismail – 1B



Zara – 2G

## WINTER BREAK

**Monday 21<sup>st</sup> December 2015 – Friday 1<sup>st</sup> January 2016**

All pupils are to return to school on **Tuesday 5<sup>th</sup> January 2016** at 8.55am as there will be a staff inset training day on Monday 4<sup>th</sup> January 2016.



### MEAL OPTIONS

If you would like to change your child/ren's meal option for the next half term, please ensure you complete a form from the administration office. The deadline for all changes is Friday 8<sup>th</sup> January 2016. Thank you.



### FOUNDATION STAGE WINTER CONCERT 2015



Nursery and Reception classes celebrated winter in style, singing and dancing their way through "Jack Frost", "Jingle Bells", "Winter Nights" and much much more. A fantastic turn out of parents and carers urged them on and filled the room with smiles and applause.

We look forward to an exciting year of performing ahead!

### LEAVERS

Julia Martin who has taught in Reception Green will be leaving us at the end of this term to take up a EYFS manager's position in Islington.

Darren Tawhai-Gillies who teaches in 4 Blue will be leaving us to return home to New Zealand.

Daniel Booth who has taught in 3 Green will be leaving to take up a teaching position elsewhere.

Joshua Dunn who has taught in Year 5 and 6 will be returning home to Australia.

We thank these teachers for all of their hard work and wish them well for the future.

### Old Ford Primary Academy Term Dates 2015/16

Term	Start	End	Half- term holidays	Start	End	End of term holiday
<b>Spring 2016</b>	Monday 4 <sup>th</sup> January 2016	Friday 12 <sup>th</sup> February 2016	15 <sup>th</sup> – 19 <sup>th</sup> February 2016	Monday 22 <sup>nd</sup> February 2016	Thursday 24 <sup>th</sup> March 2016	25 <sup>th</sup> March – 8 <sup>th</sup> April 2016
	<b>INSET</b>					

**INSET** - All pupils are to return to school on **Tuesday 5<sup>th</sup> January 2016** at 8.55am as there will be a staff inset training day on Monday 4<sup>th</sup> January 2016.

### Coffee Morning



Coffee morning is every Thursday in the extended schools room at 9am. All welcome