

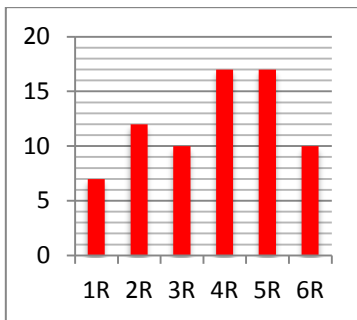


Newsletter

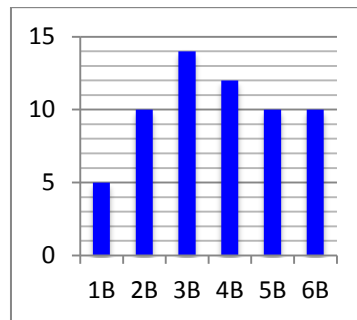
Issue 11

Friday 27th November 2015

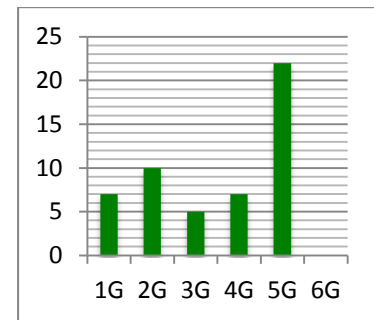
Year 1-6



6R = 10, 4R = 5, 5R/2R = 2

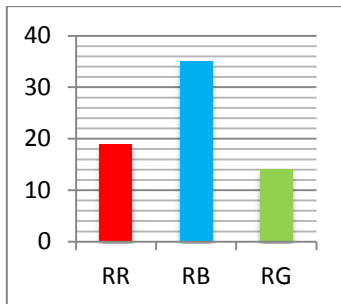


5B/6B = 10, 4B = 5, 3B = 2



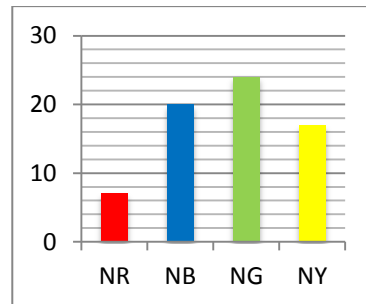
5G = 10, 3G = 5, 4G = 2

Reception



RB = 10, RG = 5, RR = 2

Nursery



NB = 10, NY = 5, NG = 2



Early Bird

Early Birds



Early Bird

Nursery Blue, Reception Red & Green, Year 1 Blue, Year 2 Green, Year 3 Blue & Green, Year 4 Red, Year 5 Blue, Year 6 Blue & Green.

Star Pupils

Reception – Inaya, Nabiha, Maimoona,

Hamdan, Aahil, Hanna.

Year 1 – Zahra, Zaynab, Uzair, Salma.

Year 5 – Connor, Fatima.

Value Award



Commitment to Lifelong Learning

Sofia – Rec Green



Inspiring excellence

Ismaeel – Rec Green



Mutual respect

Anika – Rec Green



Inspiring excellence

Parker – Rec Red

REMINDER OF MORNING PROCEDURES

Parents/carers are reminded that if pupils arrive to school morning after 9.00am, you **must** come to the administration office and sign your child in. If you do not sign your child in, there is a risk of your child not being marked in on their register which can be extremely dangerous if there were to be a fire.

If you are running late, please inform the school before 10.30am, so that your child/ren can be booked in for lunch. Thank you for your cooperation in this matter.



Coffee Morning

Coffee morning is every Thursday in the extended schools room at 9am.

END OF TERM - WINTER BREAK

The last day of term is Friday 18th December 2015

Monday 21st December 2015 – Friday 1st January 2016

All pupils are to return to school on **Tuesday 5th January 2016** at 8.55am as there will be a staff inset training day on Monday 4th January 2016.



DONATIONS OF LEGO

Dear parent/carers please could you donate any Lego (not Duplo) to the SEND department for Lego therapy sessions. Please give donations to the administration office. Thank you.

PLAYGROUNDS

Please note that staff are not on duty in playgrounds before and after school. Parents/ carers must ensure that they closely supervise their child/ren after they have been collected.

SCHOOL UNIFORM REMINDER

Pupils are to be wearing full school uniform everyday. Pupils must wear dark school trousers/skirt a white polo t-shirt/shirt and a dark school jumper/cardigan. Pupils must not wear coloured hooded jumpers or Jumpers/cardigans with large prints on them. Thank you

OLD FORD PRIMARY ACADEMY REVIEW

On Wednesday and Thursday next week, we have invited retired HMI inspectors to our school to conduct a review. Please make sure all pupils are wearing full school uniform on these days.

STAY & PLAY SESSIONS

Every Tuesday 9am-10am Ground Floor Hall
For babies and pre-school children. Contact Sharon in the Nursery 0208-980-1503

Healthy Snacks



If your child is attending an after school club/activity please provide them with a healthy snack e.g. a piece of fruit and water.



CHILDREN IN NEED

Thank you for your donations for BBC Children In Need we raised an amazing £430.30.

WINTER FAIR



Join us in the Lower Hall
Thursday 10th December 2015
3.30pm – 5.00pm

Arts and Crafts, Face painting, Cake Sale nearly new Sale etc.

Come and enjoy some festive fun. Any donations of food/drink and items for the nearly new sale table will be much appreciated.

Parent volunteers needed, Please contact Monwara for more Information.