

## Contact Us

Danielle Walsh[Manager]

[Danielle.walsh@p3charity.org](mailto:Danielle.walsh@p3charity.org)

Phone: 07875724277

P3 Old Ford Play Centre

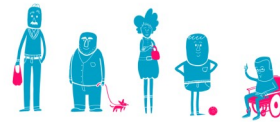
Old Ford Primary School

Wrights Road

E3 SLD

## Complaints, Suggestions & Comments

P3 Play services value any suggestions and comments you would like to make. Please ask a member of our team for a questionnaire sheet and leave your comments with the play team. We will be happy to hear from you.



Play 3

221 Walmer Road

London

Head of Children's Services

Riley Taggart

[riley.taggart@p3charity.org](mailto:riley.taggart@p3charity.org)

02073135272

07805834851

Play Development Manager

Linda Hamilton

[linda.hamilton@p3charity.org](mailto:linda.hamilton@p3charity.org)

02073135273

07875724227



*People Potential Possibility*

## Old Ford After School Play Centre



## Our Play 3 Service



Play 3 provides after school and holiday play services in many London Primary Schools. We employ professional, qualified and caring staff. We deliver activities for children and young people from 4 to 14 years and provide safe play environments that aim to support each child to learn and develop socially, physically, intellectually, creatively and emotionally.

We believe it's extremely important from an early age for children to have opportunities to take part in regular activities which are both adult-led and child-led in order to be healthy, to have fun and to learn new skills. We provide opportunities that are inclusive and deliver an array of sports, arts and crafts, dance, games, cooking, and free play opportunities.

Our service aims to be financially sustainable and flexible to meet the needs of all parents especially those who are in employment or full-time education studies. We cater for one-off bookings, emergency bookings and regular days

### ***P3 Believe;***

***"Children have the right to relax and play, and join in a wide range of cultural, artistic and other recreational activities"***  
***Article 31 of the UN Convention***

## Our Prices

**Term-time** (subject to change)

**FULL RATE**            **£8.00** per session.

**EACH SIBLING**       **£6.00** per session

To help us maintain a sustainable service please can you pay your fees on the day or in advance.

Every child is provided with a healthy snack which includes fresh fruit and water.

please ensure you arrive on time to collect your child. There is a **£10** charge for lateness.

Our Unique Reference Number (URN) is: 140966

### **For a registration form please see:-**

Play Manager between 3:30pm-5:30pm

Our website:-[www.p3charity.org](http://www.p3charity.org)

Our link on schools website

## Ways To Pay

### **On Site-By Card /contactless**

**Online-** <https://pay.p3charity.org>, book a play session then choose your play centre from the drop down box etc. Note: up to 10 sessions can be booked at any one time.

**Vouchers** from Edenred, Kiddivouchers, care-4, computer share, Sodexo, Fidelity and kidsunlimited (we can set up accounts with new providers)

**PLEASE ensure you reference the play centre and your child's first name so that we can match up the payment to the centre. There are no refunds for fees.**

### **Activities**

**Sports-** Football, Cricket, Tag-Rugby, Basket Ball & Netball

**Arts/Crafts-** Painting, Junk Modelling, Puppet Making, Jewellery Making.

**Dance-** Street Dance, Musical Games, Movement

**Homework Club-** Numeracy, Literacy & Reading

**ICT-** Games, Music & Creative Art

**Cooking-** Healthy Eating, Cultural Awareness, Baking.

**Fitness Challenge-** Assault Course, Mini Gym.

**Competitions-** Sports, Arts, Fitness

**Children's Forum-** Expressing views and ideas.